

# Mobile GIS Comes to Pueblo

## A Guide for Accessing City GIS Services

City Maps and interactive geographic information resources of the City of Pueblo, Colorado are now mobile accessible! Access maps at the tip of your fingers using your 'smartphone' or 'tablet' computer by using the application 'ESRI Explorer for ArcGIS'. Information services accessible include:

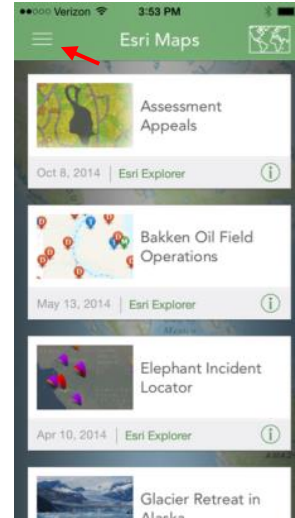
- City Map
- Government Map
- Schools Map
- Public Bus Map
- Parks Map
- Council District Map
- Zoning District Map
- Land Use District Map
- Multi-Use Trail Map
- Sales & Use Tax Map

### How to Access Services

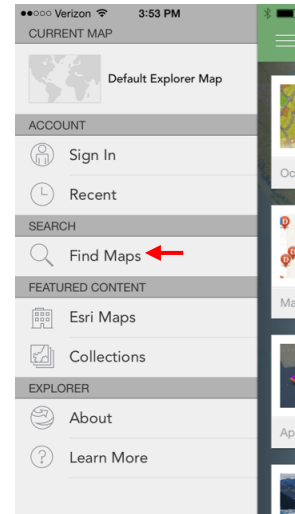
1. Download the mobile application, 'ESRI Explorer for ArcGIS' from the Apple 'App Store' or Google 'Play' to your device running an Apple iOS or Android operating system.
2. Launch the 'Explorer for ArcGIS' mobile application. You will be prompted to 'Sign' in or 'Continue without Signing In'. Select the 'Continue without Signing In' option.



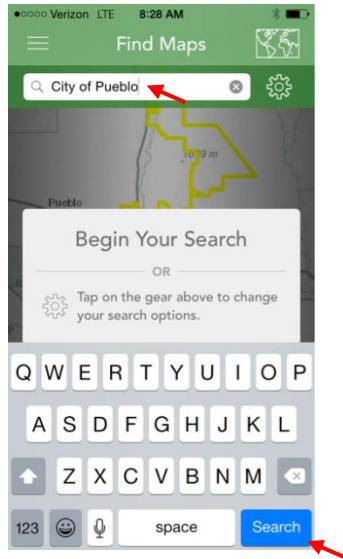
3. A user interface displaying general map resources will appear on the following user interface. Select the 'Menu' button in the upper left hand corner of the user interface.



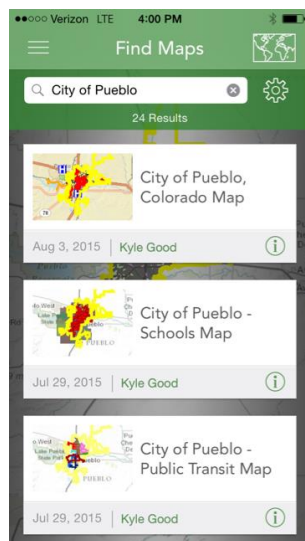
4. To 'Search' for a map created and maintained by the City of Pueblo, Colorado, select the 'Find Maps' function button under 'Search' options.



5. A search query bar will appear. Using your devices keypad or keyboard type the key phrase 'City of Pueblo'. Select 'Search'. See graphic on page 2.



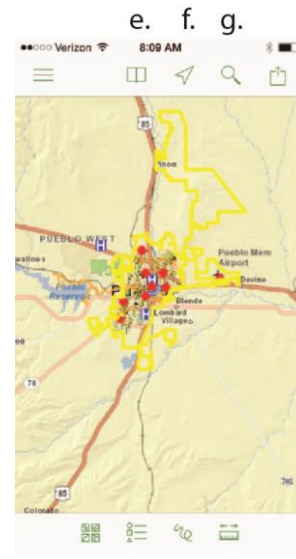
6. Scroll up or down using swipe gestures. Note, all Official City of Pueblo Map resources will have 'City of Pueblo' included in the map title. Select a map to open the. Repeat steps three (3) to six (6) to search and access a different City Map.



7. Once a map is selected and opened in a new. Use the following interactive tips and tricks to improve your user experience and search for geographically associated information.

#### Interactive Gesturing:

1. *Single Finger Swipe*: Use this gesture to navigate throughout the map.
2. *Double Finger Gestures*: Either used to zoom in and out from a particular location or rotate the map to a user defined orientation.



a. b. c. d.

#### Interactive Button Functions:

- Basemap Selector*: Choose from different base maps such as imagery, topographic maps, street maps, terrain maps, etc. Tap to select and tap 'Done' to apply to the current map you are viewing. The map will reload with the new base.
- Map Contents*: Tap this button to view a map legend. Also turn on/off specific map layers using the 'Map Layers' button. Turn on/off a layer by tapping the check mark. Select 'Done' to apply changes and re-load the current map.
- Draw*: Draw a line on the map using single figure gesturing.
- Measure*: Measure a line or an area.
- Bookmarks*: Create a map bookmark to save a location on your device. Choose 'Current Extent' to save the maps current zoom level and location or 'Default Map' extent.
- Locator Arrow*: Tap the locator area to identify your current location.
- Magnifying Glass*: Tap this button to find an address. Some maps may have additional search capabilities.

#### Technical Assistance:

For technical support using City of Pueblo, Colorado mobile resources with 'Explorer for ArcGIS' please e-mail the City of Pueblo, GIS Division at [citymaps@pueblo.us](mailto:citymaps@pueblo.us) with the subject line of 'Mobile GIS'.